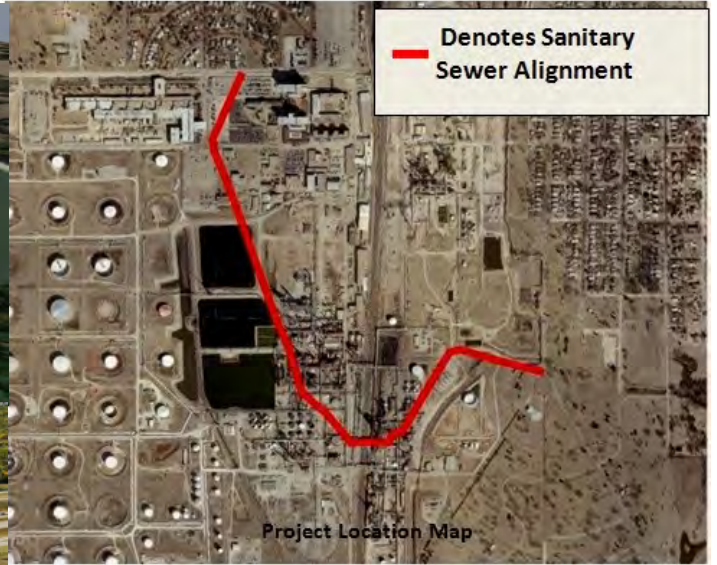
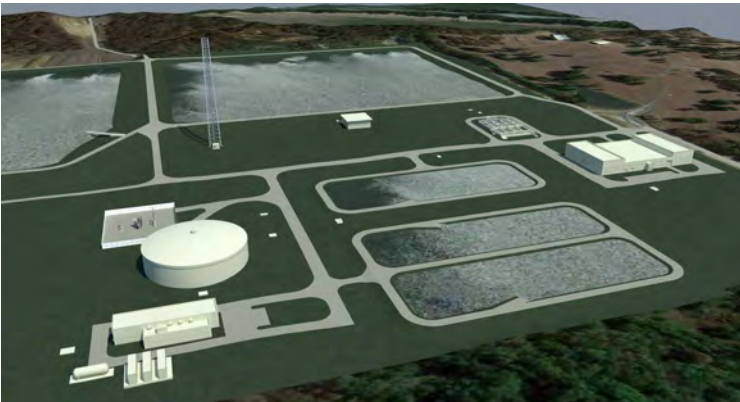


# ACEC OKLAHOMA 2025 Engineering Excellence Awards

## *CALL FOR ENTRIES*



# ACEC OKLAHOMA

## 2025

# ENGINEERING EXCELLENCE AWARDS

ACEC OKLAHOMA announces the 2025 Engineering Excellence Awards Program.

The timetable for the Oklahoma Program is:

**\*\* Dec 5, 2024 - Deadline for receipt of entries**

**\*\* Judging by a panel of judges selected from business, government, and education leaders in Oklahoma will be conducted no later than December 15.**

**\*\* The top ten firms will be notified immediately following the judging to allow the firms to finalize their submissions to the ACEC by the deadline. While our award's ceremony is in February, we will notify qualifying projects in time for the national competition.**

The Awards will be: (1) Grand Oklahoma Conceptor and four (4) Oklahoma Honor Awards. Entries not honored as the Grand Conceptor or Honor Awards will receive a "Finalist" award.

The top ten (10) projects are eligible to be submitted to the AMERICAN COUNCIL OF ENGINEERING COMPANIES national EEA Program with the top five receiving awards locally (Grand Conceptor and 4 Honor Award).

## CRITERIA FOR ENTRY:

1. The Criteria and Requirements from the ACEC Engineering Excellence Awards Program will generally be followed for the Oklahoma Program, as outlined in the ACEC “Call for Entries”. Call ACEC OKLAHOMA for the ACEC national “Call for Entries” brochure or go to the ACEC website at: <https://www.acec.org/resource/2024-call-for-entries/> (under resources link)

2. Projects entered in the competition must have been substantially completed and ready for use between **November 1, 2023 and October 31, 2024**.

3. **SUBMISSION REQUIREMENTS** (Refer to ACEC brochure, “Submission Requirements” for national entry requirements) ACEC OKLAHOMA entries must include the following:

- \* **30" x 30" Display Panel** mounted on foam board.
- \* **Entry Fee: \$350** for members of ACEC OKLAHOMA; **\$750** for non-members, payable to ACEC OKLAHOMA.
- \* Completed ACEC Entry Form including all required signatures. **(SEE NEXT PAGE) Brochure Sec 1, Item 1**

**NOTE - Entry Form marked “SAMPLE.” PLEASE USE ANYWAY...national has gone to on-line entries, and this is a “Sample” of the online form.**

**ADDITIONAL NOTE** - DO NOT send the entry fee for the ACEC national competition, and DO NOT send anything (entry form, panel, notebook, etc) to ACEC (national) at this time.

- \* One (1) Client/Owner Letter as required in Section I, Item 2 of the ACEC Brochure.
- \* One (1) Executive Summary as required in Section I, Item 3 of the ACEC Brochure.
- \* One (1) Project Description as required in Section I, Item 4 of the ACEC Brochure.
- \* Send Entries to: **ACEC OKLAHOMA, 220 N.E. 28th Street, Suite 135, Oklahoma City, OK, 73105.** Must be received by the **deadline**.

## GENERAL

ACEC deadlines are to accommodate the National Awards Presentation to ACEC Annual Convention in Washington, DC. **All State entries** will be displayed and recognized as part of the National Awards event. This will provide significant exposure of your entry, especially to Members of Congress, Agency Officials, as well as International and Washington dignitaries.

Your Display Panel **WILL NOT BE RETURNED**.

For more information, call Mike Thompson the ACEC OKLAHOMA office, (405) 525-7696.



AMERICAN COUNCIL OF ENGINEERING COMPANIES

**ACEC**

**ENGINEERING  
EXCELLENCE AWARDS**

**2025** | CALL FOR  
ENTRIES



**EAA National Deadline:  
Wednesday, January 8, 2025**





# 2025 CALL FOR ENTRIES

## ENGINEERING EXCELLENCE AWARDS

The American Council of Engineering Companies' (ACEC) annual Engineering Excellence Awards (EEA) competition recognizes engineering firms for projects that demonstrate an exceptional degree of innovation, complexity, achievement and value.

American engineering firms have entered their most innovative and complex projects and studies in competitions conducted by state member organizations (MOs). Qualifying projects at the state MO level are then eligible to participate in the ACEC national competition. **Deadline for the national competition is Wednesday, January 8th, 2025.**

EEA entries are accepted into one of 12 project categories:

- Studies, Research and Consulting Engineering Services
- Building/Technology Systems
- Structural Systems
- Surveying and Mapping Technology
- Environmental
- Waste and Storm Water
- Water Resources
- Transportation
- Special Projects
- Small Projects
- Energy
- Industrial and Manufacturing Processes and Facilities

A distinguished panel of 25-30 judges possessing a vast array of built environment and technical expertise will be convened over three days to evaluate and rank submissions for engineering excellence. The panel then selects top award winners—8 Grand Awards and 16 Honor Awards. One Grand Conceptor Award will be selected from the Grand Award winners as the overall best engineering project.

Projects from all across the world are rated for uniqueness and/or innovative application of new or existing techniques; future value to and enhancing public awareness/enthusiasm for the engineering profession; social, economic, and sustainable development considerations; complexity; and successful fulfillment of client/owner's needs, including schedule and budget.

Top Award Winners (**Grand and Honor**) **MUST HAVE** a firm and/or client representative in attendance to receive on-stage recognition at the Gala. National Recognition Award Winners will also receive a special tribute during a Gala.

Every year, ACEC's EEA Gala provides firms with national recognition and a venue to showcase their talent and expertise in a dramatic setting. The annual black-tie EEA Gala—to be held **Tuesday, May 20, 2025**—celebrates, with pride and elegance, the most outstanding project achievements of the engineering profession.





## ACHIEVING NATIONAL RECOGNITION

ACEC's 2025 Engineering Excellence Awards competition showcases the year's best engineering achievements to a national audience of clients' industry leaders and decision-makers. All National Recognition Award Winners will be featured in the EEA Gala awards program, and special recognition given to the top 24 winning projects at the annual EEA Gala, the premier black-tie event in the engineering industry. This prestigious event will be held on **Tuesday, May 20, 2025**, at the Grand Hyatt in Washington, D.C.

### ELIGIBILITY

Any engineering or surveying firm is eligible to enter the awards program, regardless of whether the firm is a member of ACEC.

### GENERAL CRITERIA

**1** Member and non-member firm entries should be submitted to the state MO in accordance with local entry rules. Contact your state ACEC MO office for details. Entries only advance to the national competition through the recommendation of a state-level MO.

Entries submitted to the ACEC national competition must be electronically submitted in accordance with the rules and requirements outlined in this brochure.

**2** Each state MO may submit 10 entries from its membership. If more than 10 were submitted at the state level, the state MO may submit an additional entry for each five submitted above the 10. Any non-member entry judged to be a legitimate candidate may be submitted by the state MO for the national competition; however, the non-member submittals will count in the total submittal limitations outlined.

**3** Engineering or surveying projects that have won awards in other state or national organizations' programs are welcome in the ACEC EEA competition.

**4** Projects entered in the competition may have been executed anywhere in the world.

**5** Studies and Research (Category A) or Surveying and Mapping projects (Category D) must have been publicly disclosed by the client between Nov. 1, 2022 and Oct. 31, 2024.

Construction of projects (Categories B through L with the exception of D) must have been ready for use between Nov. 1, 2022 and Oct. 31, 2024.

**5** Entries in the national competition may be placed in any one of the 12 categories. See "Categories" section for the full listing of all eligible categories. The entering firm must select the one category that is most appropriate. A project may be entered only once by the entering firm in any category. The same project may be entered in a different category by a different entering firm. However, after a project has been entered in Category A, and the project has been constructed, the project may be entered by the same firm in a different category – B through L – in the year when eligible.

**6** Each entry must consist

- Official electronic entry

**Non-compliance with the rules may disqualify an entry. Please read the requirements thoroughly.**

**ACEC will be producing the physical display panels for the Grand and Honor Awards, each measuring 30" x 30" square, for the ACEC Convention and Gala event in Washington, D.C.**

Note: See "Preparing Your Entry" for the Engineering Excellence Awards.

**7** ACEC will not be responsible for any damages to or loss of an entrant's official electronic entry, photographic digital panel file, or anything else submitted by entrant.

**8** The ACEC Engineering Excellence Awards committee reserves the right to determine, and change if necessary, the eligibility and category classification of any entry.

### JUDGING

Entries will be judged on the basis of:

- Overall engineering excellence
- The work performed by the entering firm only
- The rating guidelines listed

Winners and affiliated state MOs will be notified shortly after judging is completed.

### AWARDS

All submissions to the National competition will receive a National Recognition Award. 24 projects move forward into the Grand and Honor award categories. The panel of judges will select 24 awards at their discretion – 8 Grand and 16 Honor Awards. A Grand Conceptor Award will be selected from the 8 Grand Award winners. The Grand Conceptor will be announced at the Gala as the top national winner selected by the judges, whose decisions on all awards are final. Awards will be presented to the clients/owners and entering firms submitting the winning entries.



# 2025 CALL FOR ENTRIES

## PUBLICITY

The public relations and marketing value of participation in the national EEA program is substantial. All national winners will be highlighted in ACEC's public relations program, which benefits all U.S. engineering firms. Working with participating firms and state MOs, ACEC will reach out to local media to announce your winning project and awards. ACEC also uses this project information to promote the industry at large and the work of our firms in our communities. All award winners are free to publicize their achievement. The Grand Conceptor Award winner will not be revealed until the Gala.

Through national and state efforts, photographic digital panels can be exhibited in such public venues as city and state administrative buildings, universities, shopping centers and office buildings. These activities enhance direct business development benefits for both local and national award winners. Further benefits are gained through feature stories presented on firms websites, social media and other publications.

## IMPORTANT INFORMATION FOR ENTRANTS

In conjunction with an ACEC goal to promote the essentiality of engineering, we strongly encourage that all project entries, no matter the category, also highlight an emphasis on the project's direct benefits to the public.

Examples include:

- **Water Resources:** The number of gallons of clean water that will result from the project and the potential impact.
- **Resiliency:** Efforts to protect X number of people from the impact of rising sea levels and floods.
- **Climate Change:** Examples of how much the project will reduce tons of carbon into the atmosphere, thus also reducing a project's footprint.
- **Transportation:** Examples of reduced congestion and improved safety; improve previously restricted community access; and reduced commuting time.

## RATING GUIDELINES FOR JUDGING

Each entrant's contribution will be evaluated based on the following five categories, which are key elements of the project description text required in the electronic submittal described below.

### 1 Uniqueness and/or Innovative Applications of New or Existing Techniques:

- Include as many measurable results as possible to tell the story of the project. For example, data points related to energy savings, number of people impacted by the project, etc.
- Does the entrant's contribution to the project demonstrate the use of a new science or a breakthrough in the general knowledge of engineering?

- Does the entrant's contribution to the project represent a unique application of new or existing technology, techniques, materials or equipment?

### 2 Future Value to the Engineering Profession and Enhanced Public Awareness/Enthusiasm of the role of engineering:

- Will the entrant's contribution to the project redefine current engineering thinking?
- Does the entrant's project increase public awareness/enthusiasm about the role of engineering in their everyday lives?

### 3 Social, Economic and Sustainable Development Considerations:

- Do the solutions identified produce secondary benefits of value to the community environment?
- Does the entrant's approach provide society with social, economic, or sustainable development benefits?
- Does the entrant's contribution to the project improve the health, safety or welfare of the public or affected environment?

### 4 Complexity:

- Did the entrant's efforts successfully address highly complex criteria or unique problems?
- Were extraordinary problems of site, location, hazardous conditions, project requirements, or similar elements present?
- Did the entrant's solutions require the use of out-of-the-ordinary technology or ingenuity for achievement of the project's goals?

### 5 Successful Fulfillment of Client/Owner Needs:

- Did the entrant successfully engage the client/owner in the overall project development process?
- Did the entrant introduce an economical and cost-effective solution?
- How did the final cost compare to the original budget estimate?
- How closely does the entrant's solution meet the total goals of the client/owner?
- Did the entrant meet the client's time schedule?

## PREPARING YOUR ENTRY

This section describes all required submission materials for entering the 2025 ACEC EEA competition. All materials must be submitted exactly as designated below. Digital files must be PC compatible and appropriate to the information being submitted (i.e., Microsoft Word for text, high resolution JPEGs, photos or other images, PowerPoint, Adobe PDFs, etc.).

# 2025 CALL FOR ENTRIES

If the submission does not meet the requirements listed, it may be disqualified.

If any part of an entry does not meet requirements listed, that portion of the entry may not be presented for judging. **Please follow the guidelines.**

*No reference to other awards is permitted in your submitted materials.*

**The project entry should occur in the state where the majority of the work was performed on the project.**

**ACEC strongly encourages joint award submissions when multiple firms are involved in the same project.**

**The EEA National competition is judged by an independent panel of experts whose selections, as governed by the EEA National judging process are final.**

## DATES TO REMEMBER

**January 8, 2025** — Submitted materials **MUST BE RECEIVED** by ACEC. Materials received after that date will **NOT** be accepted.

All materials submitted for judging in the national competition become the property of ACEC and may be used in ACEC publications, in addition to all other internal or external promotional or educational purposes. **Submitted materials will NOT be returned.**

**January 16, 2025** — The entrant's company representative, as listed on the entry form, must be available by phone.

**February 21-23, 2025** — Judging takes place in Chantilly, VA.

**May 20, 2025** — EEA Dinner and Gala Awards Program in Washington, D.C.

## SUBMISSION REQUIREMENT

The official electronic entry, along with the payment, must be submitted through the online portal.

**\*\*NOTE: No QR Codes or embedded links are permitted in any portion of an award submission\*\***

## CALL FOR ENTRIES – CATEGORIES

### CATEGORY A:

#### Studies, Research and Consulting Engineering Services

Non-design services, projects not involving the preparation of construction documents consisting of but not limited to the following types of projects:

- New products, materials and technologies
- Expert testimony
- Basic research and studies
- Computer/software technology
- Technical papers
- Public outreach/involvement
- Water conservation
- Security plans
- Project feasibility studies/economic/risk
- Value engineering

### CATEGORY B:

#### Building/Technology Systems

- Mechanical/electrical/plumbing
- Computer/technology
- Communications
- Acoustics
- Software systems
- Sustainability or carbon neutrality

- Efficiency certification standards, e.g. LEED®
- Energy efficiency - new and retrofit
- Secure facilities (military/research/correctional)

### CATEGORY C:

#### Structural Systems

- Foundations
- Tunnels
- Buildings
- Seismic design
- Towers
- Bridges
- Stadiums

### CATEGORY D:

#### Surveying and Mapping Technology

- Geometrics, ALTA, land title and rights surveys
- Control, GPS, monitoring or construction surveying
- Survey mapping, GIS/LIS, photogrammetry

### CATEGORY E:

#### Environmental

- Hazardous waste
- Solid waste
- Restoration/reclamation/remediation
- Air quality
- Noise

- Recycling
- Waste pond management
- Carbon sequestration and trading
- Mitigation

### CATEGORY F:

#### Waste and Storm Water

- Wastewater collection/treatment and disposal
- Residuals management and reuse
- Graywater systems
- CSOs
- Mine tailings
- Agricultural
- Storm water management
- Erosion control

### CATEGORY G:

#### Water Resources

- Hydraulics, hydrology
- Surface and groundwater supply development
- Treatment
- Transmission, distribution & storage
- Watershed management
- Water use reduction
- Flood risk management
- Climate adaptation
- Coastal and eco-system restoration
- Locks/dams/water control structures
- Irrigation

### CATEGORY H:

#### Transportation

- Highways
- Rail
- Airports
- Marine/ports
- Public transit
- Intermodal facilities

### CATEGORY I:

#### Special Projects

- Safety and security
- Corrosion protection/cathodic protection
- Program and construction management
- Land development
- Trenchless technologies/directional boring
- Recreational facilities
- Subsurface engineering

### CATEGORY J:

#### Small Projects

- Total project construction budget does not exceed \$2.5 million. At the entrant's discretion, except for entries in Category A, projects under \$2.5 million are not limited to this category

### CATEGORY K:

#### Energy

- Transmission and distribution
- Power generation
- Renewable energy
- Cogeneration
- Energy storage technologies
- Energy usage reduction programs
- Demand side management

### CATEGORY L:

#### Industrial and Manufacturing Processes and Facilities

- Petrochemical
- Biotech
- Manufacturing
- Heavy industry
- Industrial waste
- Materials handling
- Mining, metallurgy, mineralogy



# 2025 CALL FOR ENTRIES

## OFFICIAL ELECTRONIC ENTRY

All project information shall be submitted electronically. Each document must be uploaded separately through ACEC's Awards Submittal Portal. The electronic entry must contain the following items:

### 1 ELECTRONIC PROJECT SUBMISSION FORM

Located on the ACEC website — <http://www.acec.org/eea2025/>. Specifications: PDF format.

**NOTE:** You must submit entry fee payment with the electronic Project Submission Form. (\$1,400 for ACEC members; \$3,850 for non-ACEC members.) All payments must be made online. Refer to your MO for state competition fees.

*Original completed entry form must be signed by both the entrant and the client/owner (senior executives/officials), stating that the submitted project was substantially completed and ready for use between Nov. 1, 2022 and Oct. 31, 2024. Electronic signatures are accepted.*

The following project information must be uploaded individually and included with your Engineering Excellence Awards submittal.

**2 CLIENT/OWNER LETTER** (one page max.) Letter addressed to ACEC National describing the relationship of the client/owner and entrant in the development of the project, the project is ready to use, and how the entrant's contribution exceeded the client/owner's needs. Specifications: PDF format.

**3 EXECUTIVE SUMMARY** (one page max.) Overview of project. Describe the problem and solution. Project title and entry category must appear at the top of the page. Specifications: 8.5" x 11"; 1" side margins; single-spaced text; 12 pt. minimum size font; PDF format.

**4 PROJECT DESCRIPTION** (six pages max.) Tell the story of the project. Address items a, b, c, and d as listed below. Project title, entry category, and page number must appear at the top of each page. Entrants may use text, photos, graphics, or charts as needed. Do not reference other awards



the project has won. Specifications: 8.5" x 11"; 1" side margins; single-spaced text; 12 pt. minimum size font; PDF format.

Text must include all the following information, including budget information and summary:

- ROLE OF ENTRANT'S FIRM in the project.
- ROLE OF OTHER CONSULTANTS participating in the project.
- ENTRANT'S CONTRIBUTION TO THE PROJECT: A brief description of the entrant's contribution addressing each of the following Rating Guidelines (refer to "Rating Guideline Definitions" on pages 4 and 5 for detailed rating and judging information):

- Uniqueness and/or innovative application of new or existing techniques.
- Future value to the engineering profession and enhanced public awareness/enthusiasm of the role of engineering.
- Social, economic, and sustainable development considerations.
- Complexity.
- Successful fulfillment of client/owner needs.

**Include total project construction budget cost, total project construction actual cost, entrant's portion of the total project construction budget cost, entrant's portion of the total project construction actual cost, and project scheduled and actual dates of completion (as indicated on the Electronic Project Submission Form). Reminder: These costs are not Engineering Fees.**

d. **SUMMARY:** Describe in layman's terms why this project is worthy of special recognition (word count between 100 - 500 words). Explain all factors that exhibit the project's uniqueness and complexity, such as innovative engineering, challenges faced and overall social impact. **NOTE:** This summary may provide the basis for all ACEC publicity on the project.

### 5 KEY PARTICIPANTS

List the key participants on the project including firm name, address, phone number, website, and e-mail address of each participant. Include contractors, subcontractors, other engineers, architects and designers significantly involved in the project. Specifications: 8.5" x 11"; Excel file.

### 6 PHOTOS OR GRAPHICS

Six different photos or graphics (one per page) with captions describing the subject matter (refer to "Image Guidelines" below). Captions shall begin with: Photo 1, Photo 2, etc. Specifications: JPEG file; RGB format; High Resolution (300 dpi).

**Photo Captions:** Once photos are uploaded, type in the captions in the small box under each photo on the online submittal site. No text is permitted on the photos other than the cover slide.

# 2025 CALL FOR ENTRIES



## IMAGE GUIDELINES

Because the images will be projected on a large screen during the EEA gala, it is very important to submit sharp, high-quality, high-resolution images.

Three of the photographs must show the completed project and provide the highest level of visual impact for publicity. Three of the photographs must display the planning, startup, and/or construction phases of the project.

## 7 PHOTOGRAPHIC DIGITAL PANEL FILE

A digital copy of the photographic digital panel.  
*Specifications:* JPEG file; RGB format; High Resolution (300 dpi).

**IMPORTANT:** The Digital Panel File should be a key part of the project submittal and the text and digital photos should demonstrate the challenges, solutions, innovation, complexity and unique aspects of key project elements. The digital panel should be prepared with high-quality photos and graphics and with text as described below.

ACEC will be producing the physical display panels for the Grand and Honor Awards, each measuring 30" x 30" square, for the ACEC Convention and Gala event in Washington, D.C.

## PHOTOGRAPHIC DIGITAL PANEL FILE REQUIREMENTS

- 1. PHOTOS/GRAPHICS:** Maximum of 6 photos and/or graphics shall be used on the photographic digital panel file. Each image shall be a minimum of 7" x 5" or 35 square inches in area. A background photo is not considered a photograph.
- 2. TEXT/FONTS:** Panel text may not exceed 250 words total, not including captions. Font sizes: 32 pt. minimum font for text or descriptions; 28 pt. minimum font for captions and graphics.
- 3. REQUIRED ELEMENTS:** The front of the photographic digital panel file shall also include the EEA new logo (download from ACEC website), title and location of the project or study, client/ owner's name and location, and entering firm's name and location (minimum 32 pt. font size).

## 8 MEDIA LIST

E-mail addresses of local newspapers, TV, radio stations and other media outlets where your project can be highlighted. If the state MO or entrant prefers to handle all local and national publicity for the project, include a statement to that effect. *Specifications:* Excel file; 8.5" x 11" or 11" x 17".

## 9 PRESS RELEASE (two pages max.)

Press release that clearly and concisely describes the project and the entrant's participation, based on information presented in the Project Description. Also describe the value of the project to the community including information such as the number of people served, cost savings, etc. Do not reference other awards the project has won. *Specifications:* double-spaced; 8.5" x 11"; PDF format.

## 10 POWERPOINT PRESENTATION

PowerPoint file, containing 8 slides including one (1) title slide with EEA new logo, firm name, project name, project location, city and state, followed by: Six (6) slides which include photos 1 through 6 (same photos as Item #6 above), and captions for each photo. Do not include caption/text on the photo. Plus one (1) slide that contains the photographic display panel. Accepted file format is PowerPoint (PPT or PPTX) only. This presentation will be used by the judges as part of their evaluation. Do not include sound, transition effects, animations, present timing, or slide show sequencing. A sample PowerPoint presentation is downloadable from the ACEC website.

## 11 SUPPLEMENTARY REPORT

Include a supplementary report containing the findings portrayed with text, graphs, or photos, as needed.

**NOTE:** This report is **ONLY** required for Category A submittals.

## DEADLINE

All electronic submission must be received by  
**January 8, 2025.**



# 2025 CALL FOR ENTRIES

## SAMPLE ENTRY FORM

Furnish all information requested below for each entry (signatures by the submitting firm(s) and the client(s)/owner(s) are required). Firm, project, and client/owner's name should be typed or printed as they are to appear on the award. Please limit the project name to 45 characters. A fee of \$1,400 per entry for ACEC members (\$3,850 for non-ACEC members). All payments must be submitted online. Online Payment Method: Visa, Master Card, American Express or Discover.

### ABOUT THE PROJECT

Project Name \_\_\_\_\_ (limit to 45 characters)

- |  |  |  |   |
|--|--|--|---|
| <input type="checkbox"/> A. Studies, Research, and Consulting Engineering Services | <input type="checkbox"/> D. Surveying and Mapping Technology | <input type="checkbox"/> H. Transportation   | <input type="checkbox"/> L. Industrial and Manufacturing Processes and Facilities |
| <input type="checkbox"/> B. Building/Technology Systems                            | <input type="checkbox"/> E. Environmental                    | <input type="checkbox"/> I. Special Projects |   |
| <input type="checkbox"/> C. Structural Systems                                     | <input type="checkbox"/> F. Waste and Storm Water            | <input type="checkbox"/> J. Small Projects   |   |
|  | <input type="checkbox"/> G. Water Resources                  | <input type="checkbox"/> K. Energy           |   |

Project Location: City \_\_\_\_\_ State \_\_\_\_\_

U.S. Congressional Representative's name in district where entering firm is located \_\_\_\_\_

U.S. Congressional Representative's name in district where project is located \_\_\_\_\_

What state/MO (member organization) is sponsoring this submission? \_\_\_\_\_

What was the Entrant's Role in the project? \_\_\_\_\_

### ABOUT THE PROJECT'S SCHEDULE AND BUDGET

Budgeted and/or actual costs may not apply to some studies in Category A and some projects in Category D.

With the exception of Category A and some Category D projects, costs reflected below are always construction costs and are NOT ENGINEERING FEES. If your firm was responsible for the entire engineering-design of the project, then the Entrant's Portion of the Total Construction Budget amount and the Entrant's Portion of the Total Construction Actual Cost amount will be the same as the Total Construction Budget amount and Total Construction Actual Cost amount.

If your firm was not responsible for the entire engineering-design of the project, then the Entrant's Portion of the Total Construction Budget amount and the Entrant's Portion of the Total Construction Actual Cost amount should be the part of total project construction cost your firm was responsible for. (i.e. a mechanical engineering firm was responsible for \$12M of a total Construction budget of \$40M. \$12M is the Entrant's Portion of the Total Construction Budget. \$40M is the Total Construction Budget.)

Completion/Use Dates: Scheduled \_\_\_\_\_ Actual \_\_\_\_\_

Category A & D Costs: Budgeted \$ \_\_\_\_\_ Actual \$ \_\_\_\_\_

Construction Costs: Total Construction Budget \$ \_\_\_\_\_ Total Construction Actual \$ \_\_\_\_\_

Entrant's portion of Total Construction Budget \$ \_\_\_\_\_ Entrant's portion of Total Construction Actual \$ \_\_\_\_\_

Check box if project was awarded through QBS process.

### ABOUT THE FIRM(S) SUBMITTING THE PROJECT

Entering Firm(s) \_\_\_\_\_

Firm CEO \_\_\_\_\_

Firm Representative \_\_\_\_\_

Must be available by phone on Thursday, January 16, 2025 (phone calls will only be made if there are clarifications or additional information required for your submittal).  Please check this box if this person is to receive ALL EEA correspondence only.

Address (no P.O. Box) \_\_\_\_\_ City \_\_\_\_\_ State \_\_\_\_\_ Zip \_\_\_\_\_

Phone (\_\_\_\_\_) \_\_\_\_\_ Cell (\_\_\_\_\_) \_\_\_\_\_ E-mail \_\_\_\_\_

I hereby authorize submission of this project into the American Council of Engineering Companies' 2025 Engineering Excellence Awards competition.

Senior Executive/Principal \_\_\_\_\_  Please check this box if this person is to receive ALL EEA correspondence only.

Signature \_\_\_\_\_ Date \_\_\_\_\_

Address (no P.O. Box) \_\_\_\_\_ City \_\_\_\_\_ State \_\_\_\_\_ Zip \_\_\_\_\_

Phone (\_\_\_\_\_) \_\_\_\_\_ E-mail \_\_\_\_\_

Marketing Coordinator \_\_\_\_\_  Please check this box if this person is to receive ALL EEA correspondence only.

Signature \_\_\_\_\_ Date \_\_\_\_\_

Address (no P.O. Box) \_\_\_\_\_ City \_\_\_\_\_ State \_\_\_\_\_ Zip \_\_\_\_\_

Phone (\_\_\_\_\_) \_\_\_\_\_ E-mail \_\_\_\_\_

### ABOUT THE CLIENT/OWNER(S) OF THE PROJECT

Client/Owner(s) \_\_\_\_\_

I believe the work of the engineer meets the intended uses and expectations for the project and hereby grant permission to enter this project in the ACEC 2025 Engineering Excellence Awards competition, and authorize publication of images and details of the project. I confirm that the project was ready for use between November 1, 2022 and October 31, 2024.

Client/Owner Representative \_\_\_\_\_

Title \_\_\_\_\_ Signature \_\_\_\_\_ Date \_\_\_\_\_

Address (no P.O. Box) \_\_\_\_\_ City \_\_\_\_\_ State \_\_\_\_\_ Zip \_\_\_\_\_

Phone (\_\_\_\_\_) \_\_\_\_\_ E-mail \_\_\_\_\_